

## Terminal housing f. motor Han 10B 80, wi

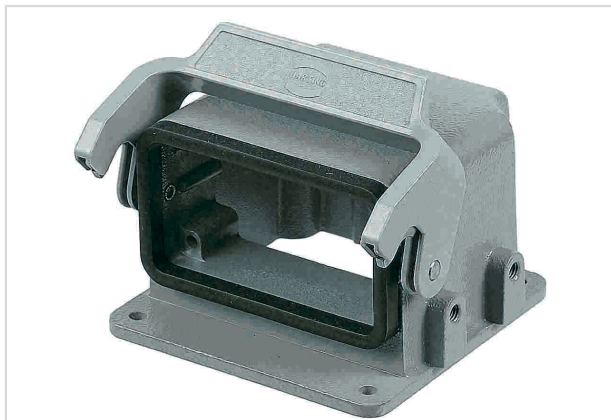


Image is for illustration purposes only. Please refer to product description.

|                    |   |
|--------------------|---|
| Part number        | 09 30 410 0901  |
| Specification      | Terminal housing f. motor Han 10B 80, wi  |
| HARTING eCatalogue | <a href="https://b2b.harting.com/09304100901">https://b2b.harting.com/09304100901</a> |

### Identification

|                          |                               |
|--------------------------|-------------------------------|
| Category                 | Hoods/Housings                |
| Series of hoods/housings | Han-Drive®                    |
| Type of hood/housing     | Housing for motor application |

### Version

|                |                      |
|----------------|----------------------|
| Locking type   | Single locking lever |
| Han-Easy Lock® | Yes                  |
| Size           | 10 B                 |

### Technical characteristics

|  |                 |
|--|-----------------|
| Limiting temperature                   | -40 ... +125 °C |
| Degree of protection acc. to IEC 60529 | IP65            |
| Type rating acc. to UL 50 / UL 50E     | 4               |
|  | 4X              |
|  | 12              |
| Distance assembly fixing holes         | 68 mm           |

### Material properties

|                         |                      |
|-------------------------|----------------------|
| Material (hood/housing) | Aluminium die-cast   |
| Surface (hood/housing)  | Uncoated             |
| Material (seal)         | NBR                  |
| Material (locking)      | Polycarbonate (PC)   |
|                         | Stainless steel      |
| Colour (locking)        | RAL 7037 (dust grey) |



Pushing Performance

## Material properties

Material flammability class acc. to UL 94  
(locking levers) V-0

RoHS compliant

ELV status compliant

China RoHS e

REACH Annex XVII substances No

REACH ANNEX XIV substances No

REACH SVHC substances No

## Specifications and approvals

Approvals DNV GL

CE Yes

## Commercial data

Packaging size 1

Net weight 251.6 g

Country of origin Germany

European customs tariff number 85389099

eCl@ss 27440202 Shell for industrial connectors