

## Terminal housing f. motor Han 10B 1 leve

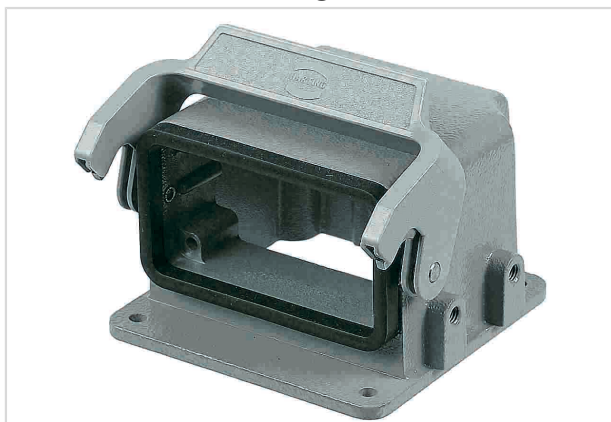


Image is for illustration purposes only. Please refer to product description.

Part number	09 30 410 0960
Specification	Terminal housing f. motor Han 10B 1 leve
HARTING eCatalogue	<a href="https://b2b.harting.com/09304100960">https://b2b.harting.com/09304100960</a>

### Identification

Category	Hoods/Housings
Series of hoods/housings	Han-Drive®
Type of hood/housing	Housing for motor application
Description of hood/housing	With thermo-plastic cover

### Version

Locking type	Single locking lever
Han-Easy Lock®	Yes
Size	10 B

### Technical characteristics

Limiting temperature	-40 ... +125 °C
Degree of protection acc. to IEC 60529	IP65
Type rating acc. to UL 50 / UL 50E	4
	4X
	12
Distance assembly fixing holes	70 mm

### Material properties

Material (hood/housing)	Aluminium die-cast
Surface (hood/housing)	Uncoated
Material (seal)	NBR
Material (locking)	Polycarbonate (PC)
	Stainless steel



Pushing Performance

## Material properties

Colour (locking)	RAL 7037 (dust grey)
Material flammability class acc. to UL 94 (locking levers)	V-0
RoHS	compliant
ELV status	compliant
China RoHS	e
REACH Annex XVII substances	No
REACH ANNEX XIV substances	No
REACH SVHC substances	No

## Specifications and approvals

Approvals	DNV GL
CE	Yes

## Commercial data

Packaging size	1
Net weight	303.4 g
Country of origin	Germany
European customs tariff number	85389099
eCl@ss	27440202 Shell for industrial connectors