

Terminal housing f. motor Han 10B 1 leve

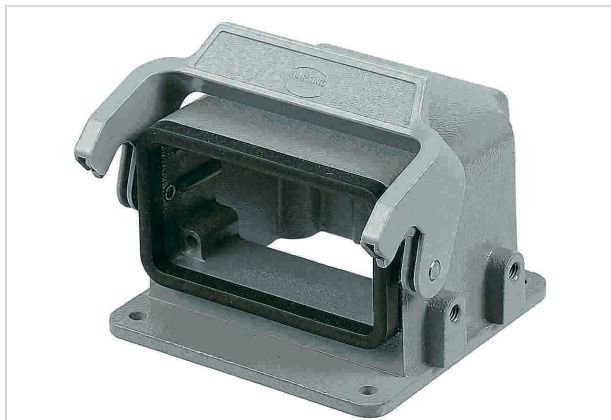


Image is for illustration purposes only. Please refer to product description.

Part number	09 30 410 0921
Specification	Terminal housing f. motor Han 10B 1 leve
HARTING eCatalogue	https://b2b.harting.com/09304100921

Identification

Category	Hoods/Housings
Series of hoods/housings	Han-Drive®
Type of hood/housing	Housing for motor application

Version

Locking type	Single locking lever
Han-Easy Lock®	Yes
Size	10 B

Technical characteristics

Limiting temperature	-40 ... +125 °C
Degree of protection acc. to IEC 60529	IP65
Type rating acc. to UL 50 / UL 50E	4
	4X
	12
Distance assembly fixing holes	73 mm

Material properties

Material (hood/housing)	Aluminium die-cast
Surface (hood/housing)	Uncoated
Material (seal)	NBR
Material (locking)	Polycarbonate (PC)
	Stainless steel
Colour (locking)	RAL 7037 (dust grey)



Pushing Performance

Material properties

Material flammability class acc. to UL 94
(locking levers) V-0

RoHS compliant

ELV status compliant

China RoHS e

REACH Annex XVII substances No

REACH ANNEX XIV substances No

REACH SVHC substances No

Specifications and approvals

Approvals DNV GL

CE Yes

Commercial data

Packaging size 1

Net weight 256 g

Country of origin Germany

European customs tariff number 85389099

eCl@ss 27440202 Shell for industrial connectors