

Han drive housing 10B with hinged cover

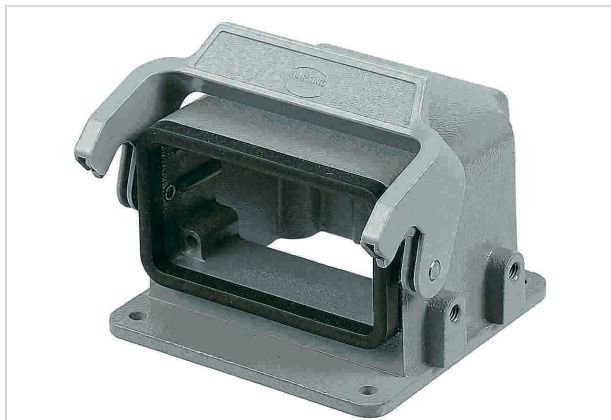


Image is for illustration purposes only. Please refer to product description.

Part number	09 30 010 0961
Specification	Han drive housing 10B with hinged cover
HARTING eCatalogue	https://b2b.harting.com/09300100961

Identification

Category	Hoods/Housings
Series of hoods/housings	Han-Drive®
Type of hood/housing	Housing for motor application
Description of hood/housing	Powder-coated With thermo-plastic cover

Version

Locking type	Single locking lever
Han-Easy Lock®	Yes
Size	10 B

Technical characteristics

Limiting temperature	-40 ... +125 °C
Degree of protection acc. to IEC 60529	IP65
Type rating acc. to UL 50 / UL 50E	4 4X 12
Distance assembly fixing holes	70 mm

Material properties

Material (hood/housing)	Aluminium die-cast
Surface (hood/housing)	Powder-coated
Colour (hood/housing)	RAL 7037 (dust grey)
Material (seal)	NBR



Pushing Performance

Material properties

Material (locking)	Polycarbonate (PC) Stainless steel
Colour (locking)	RAL 7037 (dust grey)
Material flammability class acc. to UL 94 (locking levers)	V-0
RoHS	compliant
ELV status	compliant
China RoHS	e
REACH Annex XVII substances	No
REACH ANNEX XIV substances	No
REACH SVHC substances	No

Specifications and approvals

Approvals	DNV GL
CE	Yes

Commercial data

Packaging size	1
Net weight	272.6 g
Country of origin	Germany
European customs tariff number	85389099
eCl@ss	27440202 Shell for industrial connectors