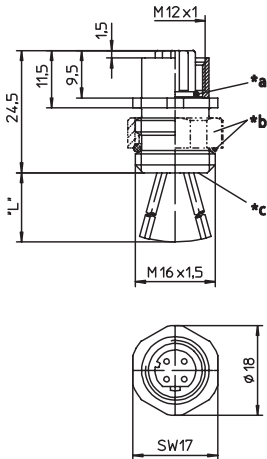




Industrial Ethernet Receptacle Connectors for PROFINET or Ethernet/IP Applications



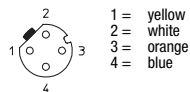
- *a O-Ring
- *b adjustable nut and o-ring enclosed separately
- *c solder contacts potted with epoxy
- "L" 0,5 m

Type	0986 EFC 151 A
Product description	Receptacle connector, M12 female connector for front mounting, 4 poles, D coding, adjustable, assembled stranded wire, solder contacts potted with epoxy, chassis side thread M16 x 1.5. – especially suitable for Industrial Ethernet –
Environmental	
Degree of protection	IP 67 / NEMA 6P
Operating temperature range	-25°C (-13°F) / +80°C (+176°F)
Mechanical	
Housing / Molded body	CuZn, nickel-plated
Pins	4D
Insert	TPU, self-extinguishing
Lead (mm²)	22 AWG
Contacts	CuZn, pre-nickel and 0.3 microns gold-plated
O-ring	FKM
Adjustable nut	CuZn, nickel-plated
Electrical	
Contact resistance	≤ 5 mΩ
Nominal current at 40°C	4 A
Nominal voltage	240 V
Test voltage	2.0 kV eff. / 60 s
Insulation resistance	> 10 ⁹ Ω
Pollution degree	3

The application of these products in harsh environments should always be checked before use. Specifications subject to alteration.

Pin assignment

Female, 4-poles D-coding



Part number	Order number
0986 EFC 151 A	68836

