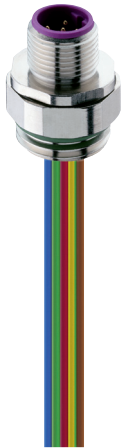




PROFIBUS Receptacle Connectors

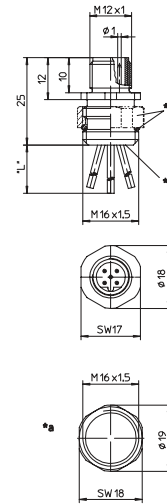
0976 PMC 151



M12 Male

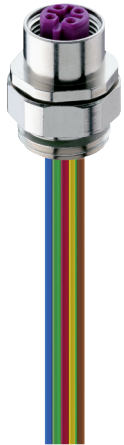
Receptacle connector, M12 male connector for front mounting, 5 poles, B coding, adjustable, assembled stranded wire, solder contacts potted with epoxy, chassis side thread M16 x 1.5.

– especially suitable for Profibus –



*a Adjustable nut and o-ring enclosed separately
 *b solder contacts potted with epoxy
 *L"0,5 m

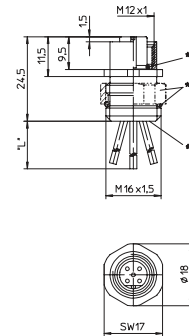
0976 PFC 151



M12 Female

Receptacle connector, M12 female connector for front mounting, 5 poles, B coding, adjustable, assembled stranded wire, solder contacts potted with epoxy, chassis side thread M16 x 1.5.

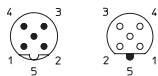
– especially suitable for Profibus –



*a O-Ring
 *b adjustable nut and o-ring enclosed separately
 *c solder contacts potted with epoxy
 *L"0,5 m

Pin Assignment

M12 - 5 Poles (B-Coding)



- 1 = brown
- 2 = green
- 3 = blue
- 4 = red
- 5 = green/yellow

Contact 5 leading



Be Certain with Belden

PROFIBUS Receptacle Connectors

0976 PMC 151 | 0976 PFC 151

Technical Data

Environmental



Degree of protection IP 67 / NEMA 6P
 Operating temperature range -25°C (-13°F) / +80°C (+176°F)

Mechanical

Housing / Molded body CuZn, nickel-plated
 Insert TPU, self-extinguishing
 Contact CuZn, pre-nickeled and 0.8 microns gold-plated
 O-ring FKM
 Adjustable nut CuZn, nickel-plated

Electrical

Contact resistance ≤ 5 mΩ
 Nominal current at 40°C 4 A
 Nominal voltage 60 V
 Test voltage 1.5 kV eff. / 60 s
 Insulation resistance > 10⁹ Ω
 Pollution degree 3

Part Number	Pins	
0976 PMC 151	5B	 
0976 PFC 151	5B	