

Product data sheet

Item No. R1.188.2010.0

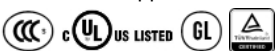
Device for monitoring of safety-related circuits
SNV4063KL-C 3S DC 24V (A)

Base unit, single-channel or two-channel control, automatic-/ manual reset with reset switch monitoring, 2 immediate switching current paths, 1 enabling current path off-delayed , 0,15s - 3s, DC 24 V, push-in-terminals pluggable



Item No.	R1.188.2010.0
EAN	4046521297440
Order Unit	1 Piece(s)

Certificates / Approvals



Technical data

General

Function display	3 LED, green
Creepage distances and clearances between the circuits	EN 60664-1
Protection degree according to DIN EN 60529 (housing)	IP40
Protection degree according to DIN EN 60529 (terminals)	IP20
Ambient temperature min.	-25 °C
Ambient temperature max.	55 °C
Wire range cage clamp terminals	2 x 0,25mm ² - 1,5mm ²
Weight	0.2 kg
Standards	EN ISO 13849-1EN 62061EN 62061
Suited for safety functions	Yes
With muting function	No
Feedback circuit	Yes
Start contact	Yes
Stop category acc. to IEC 60204	1
Rail mounting possible	Yes

Connection Data

Detachable clamps	Yes
Type of electric connection	Spring clamp connection

Application

Model	Basic device
Suitable for monitoring of magnetic switches	Yes
Suitable for monitoring of proximity switches	Yes
Suitable for monitoring of emergency-stop circuits	Yes
Suitable for monitoring of optoelectronic protection equipment	Yes
Suitable for monitoring of position switches	Yes

Output circuit

Enabling paths	Normally open contact
Enabling paths, time delayed	Normally open contact, off delay
Contact material	Ag-alloy, gold-plated
Rated switching voltage, enabling paths AC	230 V
Rated switching voltage, enabling paths DC	24 V
Max. thermal current I	6 A
Max. total current I ² of all current path	5 A ²
Application category AC-15 (NO)	Ue 230V, Ie 3A
Application category DC-13 (NO)	Ue 24V, Ie 2A
Short-circuit protection (NO), max. fuse insert	6 A class gG fuse, fuse integral < 100 A ² s
Mechanical life	10 ⁷ switching cycles
Outputs, signalling function, undelayed, with contact	0
Outputs, signalling function, delayed, with contact	0
Outputs, safe, undelayed, with contact	2
Outputs, safe, delayed, with contact	1

Control circuit

Nominal output voltage DC	22 V
Input current (safety circuit / reset circuit)	25 mA
max. peak current (safety circuit / reset circuit)	2500 mA
Response time tA1	30 ms
Response time tA2	700 ms
Min. switch-on time	200 ms
Recovery time tW	> 500 ms
Release time tR	< 25 ms
Release time tR, delayed contacts (tolerance)	0,15 - 3 s (+ 16 %)
Synchronous time tS	leer 500 ms
Permissible test pulse time tTP	< 1 ms
max. resistivity, per channel	# (5 + (1,176 x UB / UN - 1) x 100) #
Type of switch function of the inputs	Normally open contact
Evaluation inputs	2-channel

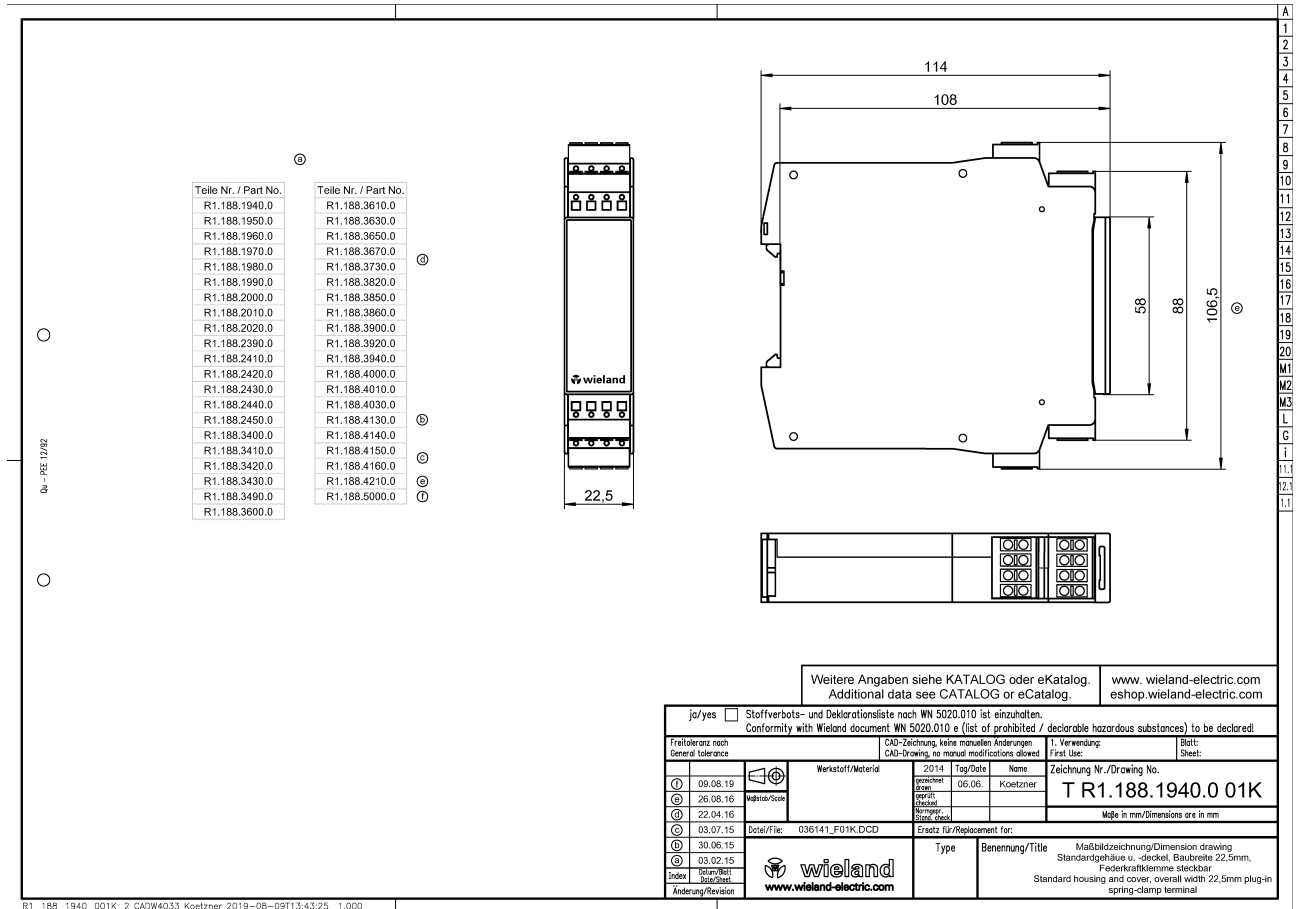
Supply circuit

Nominal voltage U	DC 24 V
Rated consumption DC	2.6 W
Electrical isolation supply circuit - control circuit	No
Min. rated DC voltage for controls	20.4 V
Max. rated DC voltage for controls	26.4 V
Min. rated control supply voltage at DC	20.4 V

Dimensions

Depth	114 mm
Width	22.5 mm
Height	106.5 mm

Technical drawing



R1_188_1940_001K_2 CADW4033 Koetznner 2019-08-09T13:43:25 1.000