

RSFM/0,5 M M16 x 1,5

RSFM.../20/0,5 M M20 x 1,5

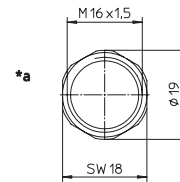
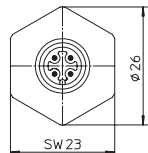
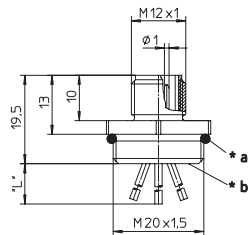
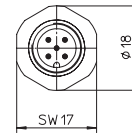
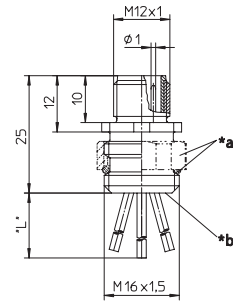
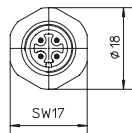
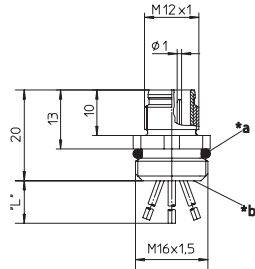
Einbausteckverbinder, kombinierter FIXCON-/M12-Stecker für die Frontmontage, konfektioniert mit Schaltlitze, Leiteranschlussbereich vergossen, einseitig M16 x 1,5/M20 x 1,5-Verschraubung (Befestigung über RSKFM 16 bzw. RSKFM 20)

Receptacle connector, combined FIXCON/M12 male connector for front mounting, assembled stranded wire, solder contacts potted with epoxy, chassis side thread M16 x 1.5/M20 x 1.5 (panel nut RSKFM 16 or RSKFM 20)

RSFPM/0,5 M

Einbausteckverbinder, kombinierter FIXCON-/M12-Stecker für die Frontmontage, justierbar, konfektioniert mit Schaltlitze, Leiteranschlussbereich vergossen, einseitig M16 x 1,5-Verschraubung

Receptacle connector, combined FIXCON/M12 male connector for front mounting, adjustable, assembled stranded wire, solder contacts potted with epoxy, chassis side thread M16 x 1.5

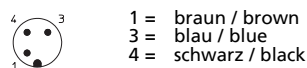


*a O-Ring lose beigelegt
O-ring enclosed separately
*b Leiteranschlussbereich vergossen
solder contacts potted with epoxy
"L" 0,5 m

*a Justiermutter und O-Ring lose beigelegt
Adjustable nut and o-ring enclosed separately
*b Leiteranschlussbereich vergossen
solder contacts potted with epoxy
"L" 0,5 m

Pinbelegung
Pin assignment

3-polig
3 poles



1 = braun / brown
3 = blau / blue
4 = schwarz / black

4-polig
4 poles



1 = braun / brown
2 = weiß / white
3 = blau / blue
4 = schwarz / black

5-polig
5 poles



1 = braun / brown
2 = weiß / white
3 = blau / blue
4 = schwarz / black
5 = grün/gelb / green/yellow

Kontakt 5 voreilend /
Contact 5 leading











8-polig
8 poles



1 = weiß / white
2 = braun / brown
3 = grün / green
4 = gelb / yellow
5 = grau / grey
6 = rosa / pink
7 = blau / blue
8 = rot / red

Technische Daten	
Umgebungstemperatur	-25°C / +80°C
Werkstoffe	
Gehäuse / Griffkörper	CuZn, vernickelt
Kontaktträger	PA 8-polig TPU
Kontakt	CuZn, unternickelt und 0,8 µm vergoldet
O-Ring	FKM RSFM.../20: Neoprene
Mechanische Daten	
Schutzart	IP 67 Nur im verriegelten oder verschraubten Zustand mit den dazugehörigen Gegenstücken.
Elektrische Daten	
Durchgangswiderstand	≤ 5 mΩ
Nennstrom bei 40°C	3- bis 5-polig 4 A 8-polig 1,5 A
Nennspannung	3- bis 4-polig 240 V 5-polig 60 V 8-polig 30 V
Bemessungsspannung	3- bis 4-polig 250 V 5-polig 63 V 8-polig 36 V
Prüfspannung	3- bis 4-polig 2,0 kV eff. / 60 s 5- bis 8-polig 1,5 kV eff. / 60 s
Isolationswiderstand	> 10 ⁹ Ω
Verschmutzungsgrad	3

Technical data	
Operating temperature range	-25°C / +80°C
Materials	
Housing / Molded body	CuZn, nickel-plated
Insert	PA 8 poles TPU
Contact	CuZn, pre-nickel and 0.8 microns gold-plated
O-ring	FKM RSFM.../20: Neoprene
Mechanical data	
Degree of protection	IP 67 Only in locked position with its proper counterparts.
Electrical data	
Contact resistance	≤ 5 mΩ
Nominal current at 40°C	3–5 poles 4 A 8 poles 1,5 A
Nominal voltage	3–4 poles 240 V 5 poles 60 V 8 poles 30 V
Rated voltage	3–4 poles 250 V 5 poles 63 V 8 poles 36 V
Test voltage	3–4 poles 2.0 kV eff. / 60 s 5–8 poles 1.5 kV eff. / 60 s
Insulation resistance	> 10 ⁹ Ω
Pollution degree	3

Bestellbezeichnung Designation		Polzahl Poles	Leiter (mm ²) Lead (mm ²)	
RSFM 3/0,5 M	RSFPM 3/0,5 M	3	0.34	 
RSFM 3/20/0,5 M			0.34	 
RSFM 4/0,5 M	RSFPM 4/0,5 M	4	0.34	 
RSFM 4/20/0,5 M			0.34	 
RSFM 5/0,5 M	RSFPM 5/0,5 M	5	4 x 0.34 / 1 x 0.50	 
RSFM 8/0,5 M	RSFPM 8/0,5 M	8	0.25	